

GIRTON CABINET WASHER/DRYER MODEL 80-0D-HP

1. DESCRIPTION

A Girton Model 80-0D-HP Cabinet Washer/Dryer is constructed of stainless steel and utilizes a reciprocating header spray system. The spray header is suspended from a carriage riding on an overhead track. The operating cycle is entirely automatic. A PLC controls each stage of the operation.

2. REGULATIONS, CODES AND STANDARDS

All engineering, design, manufacture and testing conforms to all applicable sections of the latest edition of the following codes, standards and specifications in effect at the time of order:

ASME-BPE - American Society of Mechanical Engineers

ANSI - American National Standard Institute

ASTM - American Society for Testing and MaterialsD-

OSHA - Occupation Safety and Health Administration

NEMA - National Electrical Manufacturers Associates

NEC - National Electrical Code

cGMP - Current Good Manufacturing Practices (CFR Title 21 parts 210 and 211)

NFPA - National Fire Protection Association

3. DIMENSIONS AND WEIGHT

3.1. Compartment Size

- | | |
|--|--|
| <input type="checkbox"/> 42" wide x 88" high x 100" long | <input type="checkbox"/> 54" wide x 88" high x 100" long |
| <input type="checkbox"/> 42" wide x 88" high x 144" long | <input type="checkbox"/> 54" wide x 88" high x 144" long |
| <input type="checkbox"/> 42" wide x 88" high x 180" long | <input type="checkbox"/> 54" wide x 88" high x 180" long |
| <input type="checkbox"/> 48" wide x 88" high x 100" long | <input type="checkbox"/> 60" wide x 88" high x 100" long |
| <input type="checkbox"/> 48" wide x 88" high x 144" long | <input type="checkbox"/> 60" wide x 88" high x 144" long |
| <input type="checkbox"/> 48" wide x 88" high x 180" long | <input type="checkbox"/> 60" wide x 88" high x 180" long |

3.2. Left Right Hand

3.3. Pit Dimensions: ____" wide x ____" long x 21" deep

3.4. Overall Height: ____"

3.5. Overall Width: ____"

3.6. Overall Depth: ____"

3.7. Operational Weight: 6,000 lbs.

4. CONSTRUCTION

4.1. Material Type and Finish:

- 4.1.1. **Washer Cabinet:** 14 gauge, T-304 T-316L stainless steel
Interior Finish: mill finish (2B) 35Ra or better 15Ra 8.5Ra
Exterior Finish: 35Ra or better
- 4.1.2. **Washer Tank:** 14 gauge, T-304 T-316L stainless steel
Interior Finish: mill finish (2B) 35Ra or better 15Ra 8.5Ra
Exterior Finish: 35Ra or better
- 4.1.3. **Insulation Jacket:** 20 gauge, T-304 stainless steel,
Exterior Finish: 35Ra or better

- 4.1.4. **Door:** T-304 T-316L stainless steel
Interior Finish: mill finish (2B) 35Ra or better 15Ra 8.5Ra
Exterior Finish: 35Ra or better
- 4.1.5. **Steam Heating Coil:** T-304 T-316L stainless steel
- 4.1.6. **Steam and Condensate Piping:**
Interior on Washer: stainless steel T-304 T-316L schedule 10 pipe
Exterior on Washer: stainless steel T-304 schedule 40 pipe
- 4.1.7. **Compressed Air:**
Tubing Poly-flo T-304 stainless steel.
- 4.1.8. **Potable Water Supply Ball Valves:** stainless steel
Steam Supply Ball Valves: stainless steel
- 4.1.9. **Recirculation Header and Piping:** T-316L stainless steel
Interior Finish: 35Ra or better Electro-polished to 15 Ra finish 20Ra
Exterior Finish: 35Ra or better
- 4.1.10. **Purified Final Rinse System:** T-316L stainless steel
Interior Finish: 35RA or better Electro-polished to 15 Ra finish 20Ra
Exterior Finish: 35Ra or better
- 4.1.11. **Sanitary valves:** T-316L stainless steel diaphragm valves
Interior Finish: 35Ra or better Electro-polished to 15 Ra finish
- 4.1.12. **Dryer System**
Heating surface is fabricated of copper tubes with aluminum fins. Blower is fabricated of painted steel.
Stainless steel air stream of T-304 T-316L. Blower is fabricated of T-304 T-316L stainless steel. A HEPA filter is provided on air makeup.
- 4.1.13. **Tri-Clamp Clamps:** T-304 stainless steel
- 4.1.14. **Fasteners:** T-304 stainless steel
- 4.2. **Unit Design:**
The equipment is designed to be shipped and installed as a **single unit**. Some parts may be removed prior to shipping (i.e., pumps) to decrease the possibility of damages during shipping. The maximum crate size will be approximately _____" x _____" x _____" with an estimated weight of _____ lbs.
- Bolted and gasketed** construction allows the washer to be taken down prior to crating. There will be approximately _____ # separate pieces and the largest piece will be approximately _____" x _____" x _____" with an estimated weight of _____ lbs. A minimum clearance of _____" x _____" is necessary for access into the building. It is strongly recommended Girton Manufacturing Co., Inc. be contracted to re-assemble or supervise the re-assembly of the equipment due to the custom nature of the equipment.
- 4.3. All **internal corners** have a minimum 5/16" radius.
- 4.4. See enclosed **Girton's Welding Specification** for information on current in-house welding procedures.
- 4.5. All visible **welds** on the exterior of the washing compartment are thoroughly cleaned. All welds on the interior of the washing compartment are ground and polished.
- 4.6. The **cabinet interior** is constructed to permit free draining and designed not to retain any of the process solutions.
- 4.7. The **wash compartment** is sloped to drain into the pump reservoir through a large stainless steel, basket-type debris screen. The screen is easily removable without the use of tools.
- 4.8. The **washer tank capacity** is approximately _____-gallons of water, assuring effective cleaning and economy of operation. Level control is by means of a **stainless steel float switch, which is** tied into the washer control system.

- 4.9. The **door** shall be double walled and insulated with rigid foam insulation. The door shall be baffled and gasketed against water leakage from the wash chamber. Door gaskets shall be closed cell silicone. The door shall be provided with a 16" x 18" vapor-proof heat tempered glass as a viewing window. The window is sealed against water leakage by means of a silicon gasket. The door is provided with heavy duty plated hinges and breakaway latches. Door latches shall allow emergency exit from the wash chamber without the use of panic hardware. A **door safety switch** shall be provided on the door. The switch shall stop the cycle and shut down operation in the event that the door is opened.
- 4.10. The wash tank is provided with a **steam heating coil** controlled by the control system (adjustable) to maintain the wash/rinse solutions at a pre-set temperature. A line strainer is supplied on the steam supply connection as well as condensate traps, where necessary.
- 4.11. **Pumps:**
- 4.11.1. **Recirculating wash/rinse pump** is a T-316 stainless steel horizontal centrifugal type unit, powered by a 10Hp motor. It is capable of delivering 350 gallons per minute at 90 ft head pressure.
- 4.11.2. **Sanitary recirculating wash/rinse pump** is a T-316 stainless steel horizontal centrifugal type unit, powered by a 10 Hp motor. It is capable of delivering 350 gallons per minute at 90 ft head pressure.
- 4.11.3. **Recirculating wash/rinse pump** is a T-316 stainless steel horizontal centrifugal type unit, powered by a 20Hp motor. It is capable of delivering 450 gallons per minute at 90 ft head pressure.
- 4.11.4. **Sanitary recirculating wash/rinse pump** is a T-316 stainless steel horizontal centrifugal type unit, powered by a 20 Hp motor. It is capable of delivering 450 gallons per minute at 90 ft head pressure.
- 4.12. **Potable water and steam supply ball valves** are threaded connections.
 Steam supply ball valves are threaded connections.
- 4.13. All **ancillary valves and equipment are positioned** on the washing machine top, rear and the side of the washer.
- 4.14. **Recirculation Headers** consist of two reciprocating loop headers, employing properly spaced, wide-angle stainless steel machined fanjets welded in place. These jets direct the process solutions from the top, and both sides, assuring 270° continuous coverage of the items being processed. The header is electrically driven and suspended on an overhead carriage. The header suspension system does not require lubrication. The header hoses are silicone braided and connect to the pumping system by means of tri-clamp connections.
- 4.15. **Purified Final Rinse Header** is a 270° loop mounted on and traveling with the recirculating loop headers. The header hose is a silicone braided and connects to the purified water supply by means of tri-clamp connections.
- 4.16. **Sanitary valves** have a **EPDM diaphragm** and tri-clamp ends. Two weep holes are located in the bonnet.
- 4.17. The **washer drains** by gravity. An air activated two-way ball valve directs the discharge to the drain, resulting in a quick drain time.
- 4.18. **Tri-clamp connection** use **EPDM gaskets** and are connected by means of heavy-duty clamps with wing nuts.
- 4.19. **Seals, gaskets, and bearings** are compatible with the temperatures and concentrations of cleaning agents to be used. Customer will supply information on chemicals to be used.
- 4.20. **Drying** - The tank is automatically drained prior to the start of the drying cycle. The dryer consists of a recirculated hot air system utilizing steam coils and a high volume blower to circulate hot air over the items to be dried. A small amount of room air is drawn into the system to aid in maintaining proper humidity levels for efficient drying. The controller controls the drying cycle and temperature.
- 4.21. **A compressed air system** is supplied with a filter regulator and oiler.
- 4.22. The washer is piped and wired for **single service connection** for each utility requirement.

5. CONTROLS AND OPERATION

- 5.1. The control system incorporates an **Allen Bradley Compact Logix @PLC**. This provides 512K of memory with Ethernet communication ability. The processor is aware of and controls all items on the washer. I/O cards are selected to match the control voltage. An isolated relay card is used to control high current draw items or items not operable at the control voltage. Analog cards are set to accept 4 - 20 mA inputs, unless otherwise noted.
- 5.2. The operator-machine consists of an **Allen Bradley Color Panelview Plus 600**, which incorporates a touch screen for operator control. This allows the user with proper password level to access all parameters of a wash recipe. All alarms are shown on the display, as well as announced audibly.
- 5.3. The washer is provided with the ability to use a printer to record operation reports. The customer should mount the printer close to the washer. Communication to the printer is RS232C so the maximum recommended distance from the washer is 50 ft. The report contains the following data: machine identification, operator, date and time, step name with time, temperature (min-max), etc.
- 5.4. A **typical treatment cycle** is defined as follows:
 - Pre-Wash – Recirculated
 - Wash – Recirculated
 - Rinse – Recirculated
 - Rinse – Recirculated
 - Final Rinse – Non-Circulated
 - Dry
- 5.5. A total of **16 programs** can be stored in the PLC. Each program can be altered or developed from the OIT. Access to change or develop the programs is password protected.
- 5.6. Girton provides three levels of **password protection** to the control system:
 - Operator Level – access to selection of existing programs only
 - Maintenance Level – access to all maintenance screens
 - Engineering Level – access to all levels. Allows changes to be made to existing programs and new programs to be developed.
- 5.7. Girton's control system provides the ability to **alarm on abnormal conditions**. The washer has alarms based on each I/O point failure. This provides a comprehensive way of determining a device failure or process deviation. In general, all analog inputs to the system will have low and high alarm points settable by the customer. Also, all safety devices, such as door switches or emergency stop buttons, have alarms associated with them.
- 5.8. **Fused disconnect switch** is supplied and located in the main electrical enclosure to cut power to the entire unit. The system is designed so if the disconnect is in the "ON" position the electrical enclosure is not be able to be opened.
- 5.9. The washer is equipped with **Emergency Stop** switches located at critical points on the machine. All doors are equipped with limit switches wired directly to the output voltage. Opening any door will disconnect voltage from output cards thereby shutting down the system. These switches are also wired as inputs to the PLC so that an alarm may be generated. All services are equipped with fail-closed-valves.
- 5.10. See enclosed **Girton's Electrical Specification** for information on wiring, conduit, tagging, instrument installation and color-coding.
- 5.11. **Noise level** as measured from 3 ft. from the washer will be a **minimum of 85 dBa**.

6. DOCUMENTATION

- 6.1. **3 Hard copies and 1 electronic copy of Girton Documentation Package**. Validation requirements and considerations are playing an increasingly major role in the purchase of new equipment or systems. Validation requires documented evidence that the equipment or system will reliably perform in a manner consistent with the original design specifications. Generation of this documentation needs to be considered at the inception of the project and implemented throughout the design and manufacturing stages of the equipment. In most instances, the equipment vendor is the most qualified party to generate the majority of the required documentation.

The documentation provided by Girton Manufacturing Co., Inc. is designed to be a complete package including all data and checklists necessary to qualify the installation and operation of the equipment and/or system. All equipment built by Girton is completely factory assembled and tested. The

documentation is used to perform Factory Acceptance Testing; witnessed and approved by the customer. All tests necessary for Installation and Operation Qualification of the equipment are performed on the equipment prior to its arrival on the job-site. Any modifications or additions required to qualify the equipment can be made at the factory prior to shipment.

This index lists all documentation supplied by Girton Manufacturing Co., Inc.

1 DRAWINGS

DRAWINGS

Installation/General Arrangement

P&ID – Piping and Instrumentation Drawing

ELECTRICAL SCHEMATICS & PANEL DRAWINGS

ELECTRICAL SCHEMATICS - 3 Phase Wiring Diagrams, Control Wiring Diagrams, I/O Wiring Diagrams

PANEL LAYOUTS - PLC Panel Layout, Motor Starter Panel Layout

AIR PIPING SCHEMATICS

2 EQUIPMENT DATA

INSTRUMENT LIST

Tag numbers, manufacturer, model number, serial number, and description for all instruments installed on the washer.

MECHANICAL EQUIPMENT LIST

Component description, manufacturer, model number, and materials of construction.

CONTROL SYSTEM COMPONENT LIST

Tag numbers, manufacturer, model number, serial number, and description for all control system components installed on the washer.

EQUIPMENT LUBRICATION LIST

List of lubricants used to maintain the washer.

USER MANUAL

Instructions for operating the equipment including loading, unloading, control system operation, and safety precautions. Maintenance schedules and repair procedures for all equipment and instruments.

CALIBRATION AND CERTIFICATION

Calibration sheets, certifications and procedures for calibrating all critical instruments provided by Girton.

(SHORT TERM) PRICED SPARE PARTS LIST

PRICED SPARE PARTS LIST

Listing of replacement parts and their corresponding order numbers. Instructions on information required when ordering replacement parts.

COMPONENT CATALOG BROCHURES

Manufacturer's catalog information concerning installation, operation, and maintenance procedures for all purchased mechanical equipment and instruments.

CUSTOMER SERVICE POLICY

Tells about the warranty, damages, replacement parts, returned merchandise, field service, cancellation, and special equipment.

3 SOFTWARE DATA

QUALITY AND PROJECT PLAN

Defines the quality and project objectives for the washer and its automated control system.

FUNCTIONAL SPECIFICATION

Outlines functional requirements for the equipment.

HMI & PLC DESIGN SPECIFICATIONS

This document defines the hardware and software specifications for the washer and its component parts. The purpose of this document is to describe the complete operation of the automated process control system for the washer.

PROGRAMS ON CD

RS VIEW

Reports generated by the display software, which define screen elements and tag numbers corresponding to PLC addresses.

PLC RS LOGIX 500 PROJECT REPORT

Annotated listing of all code used to implement the software design.

4 FACTORY ACCEPTANCE TEST

- ABXXX FAT Instructions / Reference
- ABXXX Section 02 FAT Approval Drawing Review Test
- ABXXX Section 03 FAT Instrument Tests
- ABXXX Section 04 FAT Mechanical Equipment Tests
- ABXXX Section 05 FAT Electrical Tests
- ABXXX Section 06 FAT Utility Tests
- ABXXX Section 07 FAT Control System Hardware Tests
- ABXXX Section 08 FAT Control System Software Tests
- ABXXX Section 09 FAT Calibration Tests
- ABXXX Section 10 FAT HMI Tests
- ABXXX Section 11 FAT Operation Tests
- ABXXX Section 12 FAT Alarm Tests
- ABXXX Section 13 FAT Power Failure Tests
- ABXXX Section 14 FAT Summary Report Tests
- ABXXX Section 15 FAT Project Tests
- ABXXX FAT Signature Log
- ABXXX FAT Instrument Log
- ABXXX FAT Exception Log
- ABXXX FAT Test Progress Sheet
- ABXXX FAT Exception Form

5 PASSIVATION & PUNCHLIST REPORTS

- Passivation Procedure
- Passivation Report
- Completed Punchlist

VOLUME 3 OF 4

6 SITE ACCEPTANCE TEST

- ABXXX SAT Instructions / Reference
- ABXXX Section 02 SAT Approval Drawing Review Test
- ABXXX Section 03 SAT Instrument Tests
- ABXXX Section 04 SAT Mechanical Equipment Tests
- ABXXX Section 05 SAT Electrical Tests
- ABXXX Section 06 SAT Utility Tests
- ABXXX Section 07 SAT Control System Hardware Tests
- ABXXX Section 08 SAT Control System Software Tests
- ABXXX Section 09 SAT Calibration Tests
- ABXXX Section 10 SAT HMI Tests
- ABXXX Section 11 SAT Operation Tests
- ABXXX Section 12 SAT Alarm Tests
- ABXXX Section 13 SAT Power Failure Tests
- ABXXX Section 14 SAT Summary Report Tests
- ABXXX Section 15 FAT Project Tests
- ABXXX SAT Signature Log
- ABXXX SAT Instrument Log
- ABXXX SAT Exception Log
- ABXXX SAT Test Progress Sheet

7 WELDING

Procedure Qualification Record (PQR)
Weld Procedure Specifications (WPS)
Welding Procedure Qualifications (WPQ)
Weld Inspector Qualifications
Weld Logs and Weld Maps.

8 CERTIFICATIONS

Material Certifications sent with raw materials and some instruments ordered specifically for this project
Work Order Trace Report
Material Test Reports
Certificates of Conformance/Compliance

7. SERVICE REQUIREMENTS

- 7.1. **Electrical:** 3 phase, 60 cycle, 230 460 volt, _____ amperes.
- 7.2. **Hot Water:** 180°F. Recommended minimum rate of flow of 50 gallons per minute. 1" NPT connection to the machine. 260-gallon consumption/cycle.
- 7.3. **Purified Final Rinse:** (D.I., WFI, etc.) 180°F minimum flow rate 30 gpm at 30 PSI. 1-1/2" tri-clamp connection.
- 7.4. **Steam:** 40 to 80 PSI. 1-1/2" NPT connection to the machine (for most efficient operations, 60 PSI is recommended). 900-lb./hr. requirement.
- 7.5. **Condensate:** 3/4" NPT.
- 7.6. **Drain:** 3" NPT from the machine to the drain.
- 7.7. **Ventilation:** 12" diameter vent collar is provided for connection to ventilating system. 800 CFM minimum removal required. Connection should be installed inside of vent collar to prevent leakage.
- 7.8. **Compressed Air:** 3/3" NPT connection, 90-PSI minimum, 5 CFM.

8. WARRANTY

- 8.1. Girton Manufacturing Co., Inc. warrants equipment of original manufacture against defect in workmanship and material for a period of one year from date of shipment. Provided; however, the equipment has been operated under normal working conditions for such said equipment, that it has been properly serviced and cared for, and that no adjustments have been made by unauthorized personnel that could adversely affect the operation or life of the equipment.

Girton Manufacturing Co., Inc. will replace or repair defective merchandise at its plant, FOB Millville, PA, if after inspection; the equipment or components that Girton manufactured are defective. Girton Manufacturing Co., Inc. extends to its customers on all purchased components parts, the warranty of the supplier of such said parts.

No expense, liability, or responsibility will be assumed by Girton for repairs outside Girton's factory, without written authority from Girton Manufacturing Co., Inc.

The foregoing warranty excludes all other warranties, guaranties, and/or representations; whether expressed, implies, or oral, INCLUDING, BUT NOT LIMITED TO, ALL CONDITIONS AND EXCLUSIONS OF IMPLIED WARRANTY OF MERCHANTABILITY AND OR FITNESS FOR THE PURPOSE, and the warrantor's liability for any direct damage arising from a legally proven breach of the warranty hereby extended is limited to the customer's invoice cost of the goods warranted.

- 8.2. DISCLAIMER OF CONSEQUENTIAL DAMAGES LIABILITY - Girton Manufacturing Co., Inc. shall not be liable for consequential damages of any kind, including incidental labor or other costs.

9. CANCELLATION

- 9.1. Any order on which work had been started may be cancelled only by consent of Girton Manufacturing Co., Inc. and by agreement on the part of the purchaser to cover whatever cost has been incurred, if any, to the date of the cancellation, including engineering, administrative, material purchases, labor, and overhead expended.

10. CUSTOMER TO WITNESS PRELIMINARY FACTORY ACCEPTANCE TEST (FAT)

- 10.1. Customer may witness preliminary testing performed at Girton Manufacturing Co., Inc. prior to shipment to customer's facility.

Customer will supply adequate samples of the items being washed. If customer specifies a particular chemical to be used, they shall supply it, complete with a MSDS Report. Customer shall be responsible for disposal or removal of excess chemical from premises.

- 10.2. **Factory Acceptance Test (FAT)** – Girton Manufacturing Co., Inc. will provide the necessary personnel for a maximum of 3 days to assist with the Factory Acceptance Test (FAT). The Girton Factory Technicians will work with the customer's personnel in verifying the washer is built and operates according to the FAT documentation.

11. DOCUMENTS

- 11.1. ___ # sets of **Approval Documents** will be provided to the Customer in ___ days weeks after receipt of order. Production work will not be initiated until these drawings are returned to Girton Manufacturing Co., Inc. with the appropriate signatures of the customer.

12. INSTALLATION

- 12.1. Installation will be **done by others**.

Supervision of installation by Girtons - Girton Manufacturing Co., Inc. will provide a technician for _____ (# of days) who will work with the customer's in-house personnel or with an outside contractor. The technician(s) will provide instructions for all phases of re-assembly including moving the equipment, leveling, re-assembly, and connection to utilities for an additional fee.

Set-in-place installation by Girtons -

Girton Manufacturing Co., Inc. will provide the necessary non-union labor to re-assemble the equipment and make it ready for utility connections at the customer's site. The customer will be responsible for receiving the equipment, unloading and moving it to the area where it is to be installed prior to Girton's arrival and for connecting the utilities.

Girton Manufacturing Co., Inc. will provide the necessary union labor to re-assemble the equipment and make it ready for utility connections at the customer's site. The customer will be responsible for receiving the equipment, unloading and moving it to the area where it is to be installed prior to Girton's arrival and for connecting the utilities.

Complete installation by Girtons

Girton Manufacturing Co., Inc. will provide the necessary non-union labor and material to perform a complete installation of the equipment. This includes receiving the equipment at the customer's site, unloading, uncrating, move in place, re-assembly and connection to existing utilities. The utilities must be within 4 feet from the equipment.

Girton Manufacturing Co., Inc. will provide the necessary union labor and material to perform a complete installation of the equipment. This includes receiving the equipment at the customer's site, unloading, uncrating, move in place, re-assembly and connection to existing utilities. The utilities must be within 4 feet from the equipment.

13. TERMS AND CONDITIONS

- 13.1. Payment Terms:
Please consult factory.

- 13.2. The 6% PA sales tax will be assessed on all sales. If you believe the products covered by this proposal are exempt from this tax, please send to Girton Manufacturing Co., Inc. your PA sales tax exemption certificate.

14. SHIPPING

- 14.1. Freight terms:
Collect
Prepaid by customer and add to Invoice
Third Party Billing
- 14.2. Shipment will be provided by transportation arranged by Girton Manufacturing Co., Inc. customer.
- 14.3. Shipment from Millville, PA ___ to ___ weeks, after receipt of signed Documents by Girton Manufacturing Co., Inc.

15. TOTAL COST PER SPECIFICATION, CONSULT FACTORY

16. OPTIONS

- 16.1. The Human Machine Interface (HMI), mounted on the washer, consists of a PLC based display, which will be programmed using RSView SE software, which incorporates a touch screen for operator control and monitoring. This allows the user with proper password level to access all parameters of a wash recipe. All alarms are shown on the display, as well as announced audibly. Use of this system complies with CFR21 Part 11.
- 16.2. **Pass-Through Operation:** Each door is double walled and insulated with rigid foam insulation. The doors are baffled and gasketed against water leakage from the wash chamber. Door gaskets are closed cell silicone. The doors are provided with a 16" x 18" vapor-proof heat tempered glass as a viewing window. The window is sealed against water leakage by means of a silicone gasket. A **door safety switch** is provided on each door. The switch shall stop the cycle and shut down the washer operation in the event that either door is opened.
- 16.3. **Door interlocks** prevent the load and unload door from being opened simultaneously. This system consists of two pneumatic air cylinders, two control valves all controlled by the washer controller.

Operation shall be as follows:

- Load door open - unload door is locked.
- Unload door open - load door is locked.
- Washer operating or idle - both doors are unlocked.

- 16.4. Front of washer is designed with **facia and concealment panels** providing a flush appearance when installed through one wall. Height of facia will exceed height of any permanently mounted component of washer system located on top of washer, except where it can be removed for installation.
- 16.5. A 75 gallon **Final Rinse Water tank** shall be mounted on the washer with a stainless steel **booster pump** providing pressure for final rinse cycle. The system is complete with all controls to cause the tank to fill approximately 15 minutes prior to the final rinse cycle. Final rinse water is not retained from one cycle to the next.

Final Rinse Water Tank is insulated with 1" rigid foam with a stainless steel outer jacket.

Final Rinse Tank will include a stainless steel steam heating coil that raises the incoming final rinse water temperature from 70°F to 180°F.

- 16.6. **Service-side shroud** is provided to enclose the service side of the washer. Shroud is easily removable for service access.
- 16.7. **T-316L construction** on all wetted surfaces with the exception of distribution hoses.
- 16.8. **Sprayball assembly**, which lowers into the tote interior thereby, processes the interior of the tote as well as the exterior. This assembly delivers all necessary treatment to the tote.
- 16.9. **Spray bottom jets** are mounted underneath the floor grid provide extra coverage to the bottom of items in wash chamber.

- 16.10. **Process piping** and **purified final rinse** will be **electro polished** to a 15Ra finish on the interior. OD will be 35Ra or better finish.
- 16.11. **Interior finish** to be a 35Ra or better finish.
- 16.12. A **light fixture** mounted on the exterior of the unit illuminates the wash chamber during operation.
- 16.13. The discharge pressure of the main circulation pump is monitored using a **sanitary pressure transmitter**. This pressure is recorded and alarmed by the control. The diaphragm of the sensor is attached in the wash pump discharge line using a tri-clamp connection. Girton's standard range for measuring pump pressure is 0 to 100 psi. Girton's preferred vendor is Rosemount for the instrument.
- 16.14. A **Y-strainer with manual drain valves** tied into the main drain is supplied with the steam and potable water lines. Piping and valves shall be T-304 stainless steel and have NPT connections.
- 16.15. All **compressed air lines** are T-304 stainless steel with Swagelok compression split ferrule type fittings.
- 16.16. A **sample port** in the recirculation sump allows sampling of the water. The sample port is attach via tri-clamp with connecting piping to have sufficient pitch in order to drain back into the washer recirculation tank, thus eliminating the possibility of dead legs.
- 16.17. A **drain tempering system** cools the process wash and rinse solutions from 180° F to 140° F prior to entering the customer's drain. This system consists of a temperature control with a probe located in drain line for on-off control of cold water supply valve.
- 16.18. The **conductivity** of any wash solution where a reagent is added is monitored, recorded and, if needed, alarmed by the control. A sensor is attached either in the wash pump discharge or directly into the sump. Both are inserted into a sanitary tri-clamp connection. Girton's standard range for measuring wash solution conductivity is 0 to 100 milli-siemens.
- 16.19. The **conductivity** of the final rinse with the customer's designated water will be monitored, recorded and, if needed, alarmed by the control. The sensor is attached in or near the drain line with a sanitary tri-clamp connection. Girton's standard range for measuring final rinse conductivity is 0 to 100 micro-siemens.
- 16.20. **Girton neutralization system** will be provided for the purpose of neutralizing the wash solution before going to drain. This system will include a **chemical pump** to inject the neutralizing solution and the necessary divert valves to stop the flow of water from going to the headers and direct it back to the washer sump to mix the neutralizing solution.
- 16.21. **Girton neutralization system with pH monitor** will be provided for the purpose of neutralizing the wash solution before going to drain. This system will include a **chemical pump** to inject the neutralizing solution and the necessary divert valves to stop the flow of water from going to the headers and direct it back to the washer sump to mix the neutralizing solution. The pH sensor will signal the washer PLC when the solution had reached the desired level so the drain valve can open.
- 16.22. **Automatic detergent dispenser** is provided with the control system. One (1) peristaltic pump with 120VAC motors is used to charge the wash solution with the desired reagent. The customer sets the amount of time that each dispenser will run for the wash cycle.
- 16.23. For each reagent reservoir, Girton supplies a **level monitor**. The monitor will consist of an ultrasonic sensor that will switch a PLC input when the reagent reaches the specified level. The control can then either trigger an alarm or a status message based on the input. The sensor has threads allowing it to be mounted into the lid of the customer's detergent reservoir.
- 16.24. A **sanitary pressure switch** is located in the recirculation pump discharge. To sense and alarm when the pump pressure drops below set point. The pressure switch is attached to piping via tri-clamp connections.
- 16.25. A **remote mounted Epson LX300 printer** will be provided so that a printed record of each cycle can be obtained.
- 16.26. A **stainless steel safety cable** is installed inside the wash compartment approximately 36" above the floor and runs through entire length. If the cable is pulled, the machine will immediately cease all operations. To resume operation, the power must first be turned off, then turned on again and start button depressed.

- 16.27. The washer is specified to be in a **Class I Division 2 Group D area**. All wiring, conduit, instruments, and other devices conform to the NEC and NFPA regulations for the class and division of the washer. If required, purged enclosures will be provided as well as explosion resistant conduit.
- 16.28. All **conduit** on the machine are PVC coated rigid. Fittings and conduits are PVC coated as well. Liquid tight flexible conduit is used to connect the washer's devices. Lengths of flexible conduit do not exceed 3 feet. All marks on conduit are painted with PVC paint. All conduit installation meets the current NEC requirements.
- 16.29. All controls are rated at **24VDC**, if possible. Items not able to operate at 24VDC have a control relay that will provide contacts usable at 120VAC.
- 16.30. Each motor under control have a locally mounted **HAND-OFF-AUTO** switch and a "Run" light. In HAND position, the motor runs; in OFF position, the motor stops; in AUTO position, the motor is under PLC control.
- 16.31. An **exhaust fan**, wired and mounted on machine, including manual damper, is provided. The fan will exhaust 800 CFM to the ventilating system or to the outside. A 12" diameter vent collar is also provided. The connection is installed inside of vent collar to prevent leakage.
- 16.31.1. Epoxy painted air-steam.
- 16.31.2. T-304 T-316L stainless steel air-steam.
- 16.32. An **automatic vent damper** is interwired with washer control system. The damper travel is adjustable and is set once unit is installed in the customer's facility.
- 16.33. A **pass-through heat exchanger** raises the incoming potable water temperature from 140°F to 180°F. This option is required when fast cycle times are required and ample hot water is not available from the facility supply.
- 16.34. **Sanitary pump liquid filled pressure gauge** with tri-clamp connections are supplied and located in the pump discharge piping to allow visual inspection of actual pump pressure.
- 16.35. **Additional copies of our Documentation Package** (reference item # _____ of this specification) may be purchased.
- 16.36. **Optional Documentation:**
- 16.36.1. Surface Finish Map and Certificate of Compliance
- 16.36.2. Slope Map of Process Contact Tubing and Certificate of Compliance
- 16.36.3. Video Weld Logs
- 16.36.4. Sound Level Certificate of Conformance
- 16.37. **Supervision of installation (YSOFI)** – Girton Manufacturing Co, Inc. will provide ONE Qualified Technician for ____ (*# of days*) contiguous* on-site days to Supervise and Direct Customer Personnel, Contractors or Subcontractors in all phases of Installation. This includes oversight of Uncrating and Moving the Equipment into a prepared⁽¹⁾ Wash Room, Leveling and Reassembly, Utility⁽²⁾ and Additional Support Systems⁽³⁾ Connections. Supervision of Unloading the Shipping Truck will be performed *only if* delivery occurs during the scheduled timeframe.

Supervision of Installation (Sofl) does **not** include Sub-Contracting, Equipment or Tools or Tool Rental, Dumpsters and/or Trash Disposal, Multiple Trips from our Factory (except at our discretion and as deemed necessary by our Technical Service Manager), Additional Site Preparation, Materials for Floor Protection, Integration Materials or Fabrication (other than Modular Walls, Fascia Panels, and items purchased from Girton Mfg. as an option), Equipment Start Up, Training of Personnel or Assisting with SAT or Validation Documentation.

The Customer will be responsible for all facets of installation not specifically included above. Equipment Start Up, Training of Personnel, Assisting with SAT or Validation Documentation may be purchased from Girton separately.

A Field Report will be submitted to the Customer within one week of completion of the installation.

Supervision of Installation is a quoted option and valid as part of the original equipment order. Service ordered after the original equipment order date will require a quote. Travel expenses are included in the first day billing. Additional contiguous days may be purchased for a flat fee of \$____.00 per day, but should be purchased prior to the first on-site day, if possible. This information

is based on non-union labor. Special provisions and prices apply when union labor and/or prevailing wages are required. Contact your Sales Rep for further details.

- 16.38. **Set-in-place Installation (YSIP)** - Girton Manufacturing Co, Inc. will provide Qualified Technicians for ___ (# of days) contiguous* on-site days to Unload and Uncrate, Move the equipment to a prepared⁽¹⁾ location, Reassemble and Level the Equipment. Girton Manufacturing Co, Inc. will provide all Personnel, Material, Tools and Equipment to perform the task, including Fork Trucks, Dumpsters, Welders, Hand Tools, Floor Protection and Trash Elimination.

Set-In-Place Installation (SIP) does **not** include Utility⁽²⁾ Connections, Connection of Additional Support Systems⁽³⁾, Multiple Trips from our Factory (except at our discretion and as deemed necessary by our Technical Service Manager), Additional Site Preparation, Integration Materials or Fabrication (other than Modular Walls, Fascia Panels, etc., purchased from Girton Mfg. as an option), Equipment Start Up, Training of Personnel or Assisting with SAT or Validation Documentation.

The Customer will be responsible for all facets of installation not specifically included above. Equipment Start Up, Training of Personnel, Assisting with SAT or Validation Documentation may be purchased from Girton separately.

A Field Report will be submitted to the Customer within one week of completion of the installation.

Set-In-Place Installation is a quoted option and valid as part of the original equipment order. Service ordered after the original equipment order date will require a quote. Travel expenses are included in the first day billing. Additional contiguous days may be purchased for a flat fee of \$____.00 per 8 Hr. man-day, but should be purchased prior to the first on-site day, if possible.

This information is based on non-union labor. Special provisions and prices apply when union labor and/or prevailing wages are required. Contact your Sales Rep for further details.

- 16.39. **Complete Installation (YINSTALL)** - Girton Manufacturing Co, Inc. will provide Qualified Technicians for ___ (# of days) contiguous* on-site days to Unload, Uncrate, Move the equipment to a prepared⁽¹⁾ location, Reassemble, Level the Equipment and Connect Utilities⁽²⁾ to **existing stubs** within 6' of the machine. Girton Manufacturing Co, Inc. will provide all Personnel, Material, Tools and Equipment to perform the task, including Fork Trucks, Dumpsters, Welders, Hand Tools, Floor Protection and Trash Elimination. Test and Demonstration (see below) is part of this option. If this cannot be completed contiguously (due to unavailable utilities, Customer personnel availability, etc.), a return trip must be scheduled and additional travel expenses will apply.

Complete Installation (CI) does **not** include Multiple Trips from our Factory (except at our discretion and as deemed necessary by our Manager), Additional Site Preparation, Connection of Additional Support Systems⁽³⁾, Integration Materials or Fabrication (other than Modular Walls, Fascia Panels, etc., purchased from Girton Mfg. as an option), Equipment Start Up, Training of Personnel or Assisting with SAT or Validation Documentation.

The Customer will be responsible for all facets of installation not specifically included above. Equipment Start Up, Training of Personnel, Assisting with SAT or Validation Documentation may be purchased from Girton separately.

A Field Report will be submitted to the Customer within one week of completion of the installation.

Complete Installation is a quoted option and valid as part of the original equipment order. Service ordered after the original equipment order date will require a quote. Travel expenses are included in the first day billing. Additional contiguous days may be purchased for a flat fee of \$____.00 per 8 Hr. man-day, but should be purchased prior to the first on-site day, if possible.

This information is based on non-union labor. Special provisions and prices apply when union labor and/or prevailing wages are required. Contact your Sales Rep for further details.

- 16.40. **Test and Demonstration (YTD)** - Girton Manufacturing Co, Inc. will provide ONE Qualified Technician for ___ (# of days) contiguous* on-site days to perform Start Up Testing, such as verifying utility connections and capacities, electrical supply voltage and amperage, motor rotations, completeness of assembly, missing components, etc., on fully installed⁽⁴⁾ equipment. The Technician will make normal *equipment* adjustments and test operation against factory standards. Upon completion of satisfactory testing, the Technician will demonstrate all phases of the use and operation of the equipment to any interested parties, provided sufficient time is allotted. We recommend that three to four hours be dedicated for effective demonstration. We highly recommend that at least one User of each level of access (Operator, Maintenance, Supervisor/Engineering, Administrative) be present for the demonstration. *Demonstration must not be confused with training; it is NOT a*

substitute for a complete and formal training session, 'Demonstration' is informal, with the Technician covering the highlights of the equipment and operation and hazard awareness, and answering questions from interested parties. No handout sheets or post-training testing is given.

Test and Demonstration (T&D) does **not** include mechanical reassembly or completion of wiring or pneumatics (on-skid or otherwise), any function that is normally part of the three Installation options described above, Multiple Trips from our Factory (except at our discretion and as deemed necessary by our Technical Service Manager), Additional Site Preparation, or Assisting with SAT or Validation Documentation.

The Customer will be responsible for all facets of installation not specifically included above. Supervision of Installation, Set in Place Installation, Complete Installation, Training of Personnel, Assisting with SAT or Validation Documentation may be purchased from Girton separately.

A Field Report and a copy of an Attendance Record for the demonstration will be submitted to the Customer within one week from the end of the visit.

Test and Demonstration is a quoted option and valid as part of the original equipment order. Service ordered after the original equipment order date will require a requote. Travel expenses are included in the first day billing. Additional contiguous days may be purchased for a flat fee of \$____.00 per 8 Hr. man-day, but should be purchased prior to the first on-site day, if possible.

This information is based on non-union labor. Special provisions and prices apply when union labor and/or prevailing wages are required. Contact your Sales Rep for further details.

- 16.41. **Start Up (YSTART)** - Girton Manufacturing Co, Inc. will provide ONE Qualified Technician for ____ (# of days) contiguous* on-site days to perform Start Up Testing, such as verifying utility connections and capacities, electrical supply voltage and amperage, motor rotations, completeness of assembly, missing components, etc., on fully installed⁽⁴⁾ equipment. The Technician will make normal *equipment* adjustments and test operation against factory standards. Start Up does **not** include mechanical reassembly or completion of wiring or pneumatics (on-skid or otherwise), any function that is normally part of the three Installation options described above, Multiple Trips from our Factory (except at our discretion and as deemed necessary by our Technical Service Manager), Additional Site Preparation, or Assisting with SAT or Validation Documentation.

The Customer will be responsible for all facets of installation not specifically included above. Supervision of Installation, Set in Place Installation, Complete Installation, Training of Personnel, Assisting with SAT or Validation Documentation may be purchased from Girton separately.

A Field Report will be submitted to the Customer within one week from the end of the visit.

Start Up is a quoted option and valid as part of the original equipment order. Service ordered after the original equipment order date will require a requote. Travel expenses are included in the first day billing. Additional contiguous days may be purchased for a flat fee of \$____.00 per 8 Hr. man-day, but should be purchased prior to the first on-site day, if possible. This information is based on non-union labor. Special provisions and prices apply when union labor and/or prevailing wages are required. Contact your Sales Rep for further details.

- 16.42. **Training (YTR)** - Girton Manufacturing Co, Inc. will provide ONE Qualified Technician for ____ (# of days) contiguous* on-site days to formally and thoroughly provide in-depth training to Operators, Maintenance Technicians, Engineering and Administrative Level Personnel. Our Technician will provide a combination of classroom and hands-on field training. A 'Question and Answer' period is encouraged.

16.42.1. **Topics covered are:**

- Hazard Awareness,
- Alarms and the causes of and responses to them,
- Routine Operation,
- Routine Maintenance and Trouble Shooting,
- Set Up, Management and Modification of Recipes (Cycles),
- User Management (Administration).

16.42.2. **Training (TRN)** covers the full range of access and use:

16.42.2.1. **'Operator'** level training covers the daily operation and maintenance, and is the shortest and most basic training.

16.42.2.2. **'Maintenance'** level training includes full Operator training and adds the extensive maintenance diagnostic capabilities available through the HMI, and PM requirements.

16.42.2.3. **'Engineering'** level training will include condensed Operator and Maintenance coverage and adds in-depth Recipe (Cycle) Generation and Management and Recipe and Alarm Set Points. Engineering training is typically restricted to those individuals responsible for control of validated operation.

16.42.2.4. **'Administrator'** level training will have condensed coverage for all levels of use, but will focus primarily on User Administration and Security. At this level, Users Names and Passwords are assigned and Levels of Access Controlled.

Whenever possible, a computer presentation will be shown and pertinent hand out sheets will be distributed. An Attendance Roster and post-training Retention Test will be given and copies will be provided to the Customer.

Training is a quoted option and valid as part of the original equipment order. Service ordered after the original equipment order date will require a requote. Travel expenses are included in the first day billing. Additional contiguous days may be purchased for a flat fee of \$_____.00 per day, but should be purchased prior to the first on-site day, if possible. This information is based on non-union labor. Special provisions and prices apply when union labor and/or prevailing wages are required. Contact your Sales Rep for further details.

16.43. **Site Acceptance Testing Assistance (YSAT)** - Girton Manufacturing Co, Inc. will provide ONE Qualified Technician for ____ (# of days) contiguous* on-site days to assist the Customer's Validation Group(s) with IQ/OQ of fully installed⁽⁴⁾ and running equipment. Girton Mfg. will provide an SAT Template based on the factory test documents and appropriate programming software and test instruments necessary to duplicate the factory tests. Girton Technicians will assist the Customer by providing clarification of test procedures and test results, and through our experience with the PLC and HMI Programming. Sample SAT documents are typically submitted to the Customer for early review. Machine specific documents shall be submitted to the Customer a minimum of two weeks prior to SAT.

Girton Technicians will *not* be responsible for completing partial installations, test document revisions or test completion.

A Field Report will be submitted to the Customer within one week of completion of the SAT.

Site Acceptance Test is a quoted option and valid as part of the original equipment order. Service ordered after the original equipment order date will require a requote. Travel expenses are included in the first day billing. Additional contiguous days may be purchased for a flat fee of \$_____.00 per day, but should be purchased prior to the first on-site day, if possible. This information is based on non-union labor. Special provisions and prices apply when union labor and/or prevailing wages are required. Contact your Sales Rep for further details.

16.44. Notes:

16.44.1. ⁽¹⁾ "Prepared" site is defined as one at which the building is enclosed, the floor and floor coatings are complete and where Girton personnel can work reasonably unhindered. Electricity (for tools) *must* be available. It is preferred, but not mandatory, that utilities⁽²⁾ are complete and available.

16.44.2. ⁽²⁾ "Utilities" are defined as Potable Water (Hot and/or Cold), Steam, Condensate, Ventilation, Electrical, Compressed and/or Instrument Air, and Drains. "Utilities" does *not* include Purified (DI, WRO, WFI, etc.) water sources that require high-purity pipe welding, remote Detergent systems or controls, Chiller/Glycol system piping, Facility Control or Data Systems, networked or otherwise.

16.44.3. ⁽³⁾ "Additional Support Systems" are defined as Purified Water (DI, WRO, WFI, etc.), Chiller systems, Detergent Systems, Combustible Liquids or Gas, and Breathing Air. Connection of Additional Support Systems is *always* the responsibility of the Purchaser.

16.44.4. ⁽⁴⁾ "Fully Installed" is defined as the equipment being in-place and leveled, and connected to all utilities and additional support systems. Integration with building fabric is not required.

* Excluding Saturdays, Sundays and/or Holidays, unless prearranged.

GIRTON MODEL 80-0D-HP VENDOR LIST

<u>COMPONENT</u>	<u>VENDOR</u>
Controller	Allen Bradley
Limit Switches	Allen Bradley
Temperature Transmitter	Burns
Level Switch	Madison Inc.
Jets	Spraying Systems
Transformer	Square D
Motor Starters	Square D
Terminal Strip	Square D
Fuses and Fuse Holder	Ferraz Shawmutt
Header Drive	U.S. Motor
<input type="checkbox"/> Recirculation Pump	Ampco
<input type="checkbox"/> Sanitary Recirculation Pump	Ampco
Header Hoses	Pure Fit
Ball Valves - Pneumatic Actuators	Duravalue
Compressed Air Filter Regulator	ASCO
<input type="checkbox"/> Valve (For Steam)	Duravalue
Solenoid Valve (For Pneumatic Actuators)	SMC
<input type="checkbox"/> Condensate Traps	Sarco
Sanitary Diaphragm Valve	ITT
Disconnect Switch	Square D
Emergency Stop Switch	Allen Bradley
Drying System	
A. Blower	Girton
B. Steam Coils	Super Radiator Coil
C. Steam Control Valve	Duravalue
D. Condensate Trap	Sarco
Dryer HEPA Filter	American Air Filter
 <u>OPTIONS</u>	
Door Interlock	
A. Pneumatic Cylinders	Allenair or Bimba
B. Pneumatic Control Valves	SMC
Final Rinse Tank & Pump	
A. Pump	Ampco
B. Level Switch	MTS
C. Steam Valve	Duravalue
D. Condensate Trap	Sarco

Indicating Pressure Transmitter	Rosemount or Equal
Manual Valves for Y-Strainers	Worcester
Stainless Steel Compressed Air Fittings	Swagelok
Sample Port	Tri Clover
Drain Tempering System	
A. Cold Water Control Valve	Duravalue
B. Manual Throttling Valve	Duravalue
Conductivity Sensors	Thornton
Detergent Dispenser	Knight Equipment Co.
Chemical Container Level Sensors	Carlo Gavazzi
Pressure Switch	Tri Clover
Exhaust Fan	Girton
Auto Vent Damper Motor	Honeywell
Heat Exchanger for Potable Washer	Graham
A. Steam Regulating Control Valve	Sarco
Pump Pressure Gauge	Tri Clover

Let Girton "Clean Up" The Confusion



Girton

Model 80-0

**Largest of Girton's Family
of Cabinet Washers**



**The Best
Washer
for the
Pharmaceutical
Industry's
Cleaning
Needs**

**The Girton Commitment:
Engineering Advances • Manufacturing Results • Servicing Success
Since 1927**



- **Quality Workmanship** • **cGMP Compliance** • **Versatile**
- **Operator Friendly** • **Factory Tested** • **Validatable**

Take A Look...

...inside and out. You'll see why our largest Cabinet Washer is the best cabinet washer in the pharmaceutical industry. From its exterior construction to our innovative and industry-leading Hydrospray design to the user friendly programmable logic controls, this walk-in style cabinet washer stands as the pharmaceutical industry's first choice for effective and efficient cleaning.

Quality Throughout The Machine

Girton Manufacturing uses only the finest materials and workmanship in every 80-0 it builds, provides greater reliability and decreased equipment downtime.



The 80-0 Features:

• Superior Construction

The wash compartment, tank, pump washing system, rinsing system, exterior and frame are constructed of the highest quality stainless steel, and all are mounted on adjustable leveling legs to ensure the proper fit and balance for your plant.

• Dependable Components and Easy Maintenance

Girton uses only the highest quality components, which have proved their reliability over years of use. Plus, Girton's easy-care design means each component is installed to be readily accessible from the top or side of the unit, making maintenance chores much simpler to perform.

• Controls and Electrical System

As part of the Girton Commitment, we strive to continually monitor the latest technologies and integrate them into our systems as needed. With the 80-0, you'll find our control and electrical schemes feature the very latest technology established by the pharmaceutical industry. Girton can provide the simplest to the most sophisticated of control systems, and will work very closely with you to design control systems customized for your particular washing application.

• Washing and Rinsing System

The Model 80-0 cabinet washer features our Hydrospray design. As opposed to single or multiple revolving headers, these slow-moving oscillating headers give complete and effective 360° coverage of the items being processed. Because they are driven by an outside source—either pneumatically or electrically—the pump hydraulics are reserved for only cleaning action, meaning your items are cleaned better!



And, should you choose the Final Rinse Header Option, your unit will be supplied with an additional set of headers, attached to and traveling with the wash and rinse headers, to deliver the non-circulated final rinse.

Other Features

- Vertical Pump
- Interior Cabinet Wash Down
- Gravity Drain
- Sump Bottom Flush
- Self-Cleaning Screens
- Grounded & Polished Welds on Interior
- Orbitally Welded Process Piping

Model 80-0

Unmatched Service and Support

When you purchase our largest Cabinet Washing system like the 80-0, you purchase more than just a cleaning machine — you buy our company, and our long-standing tradition of service excellence to our customers. With a Girton purchase you receive:

Custom Design Capabilities

Girton can adapt the basic design of the 80-0 to suit your operating specifications and to most effectively use your available floor space. For example, we can design components for either the right- or left-hand side of a machine...whatever will work best within your environment and make maintenance easier for you.

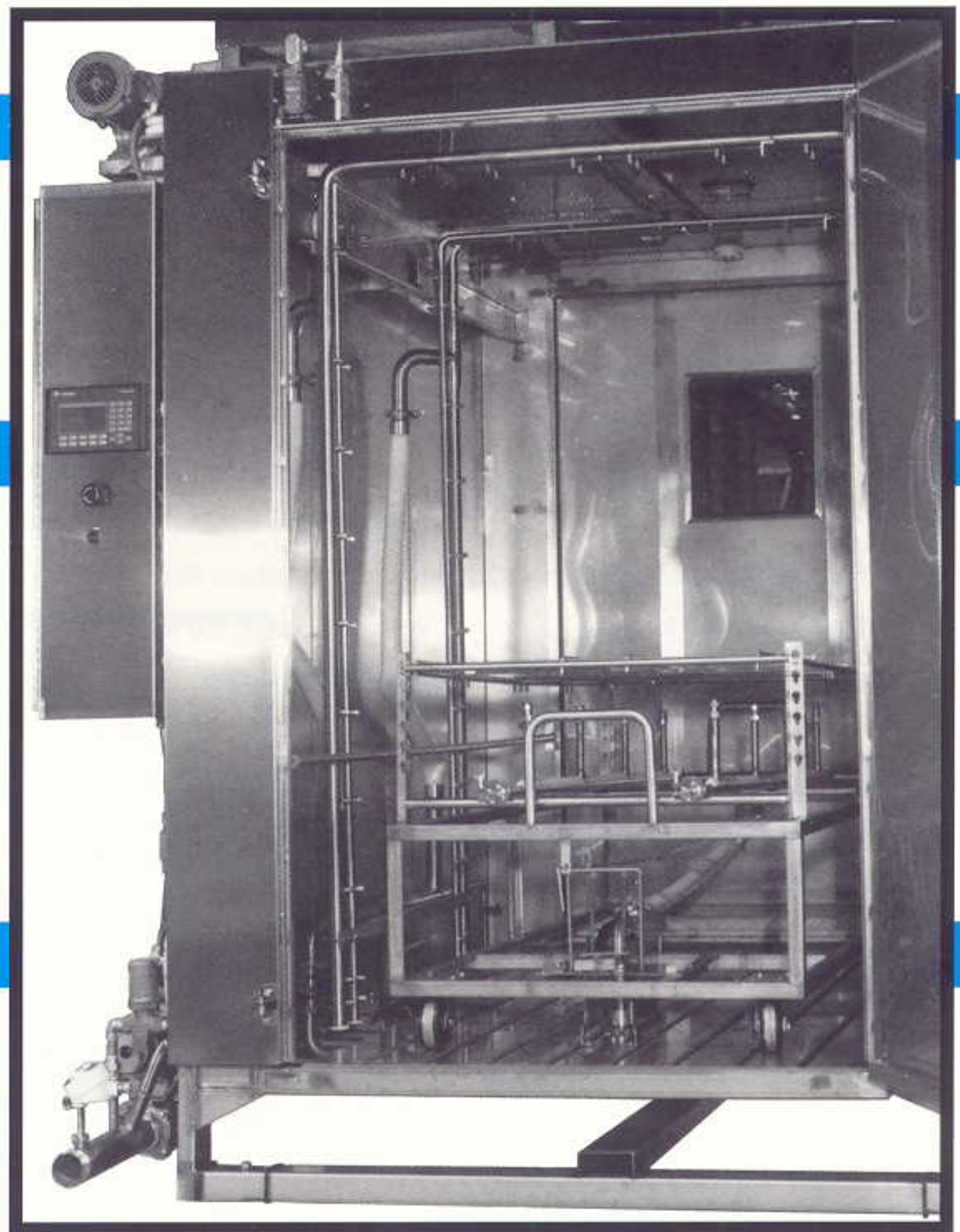
Girton can adapt or design parts racks to fit your particular application or needs.

Factory Testing

All equipment manufactured and assembled by Girton is thoroughly tested prior to shipment. In fact, we encourage your company representative to attend the testing and approve all examination results. The quality of Girton Performance Testing greatly reduces the start-up time required after final installation is complete.

Installation and Start-Up Service

Girton can provide a wide range of installation and start-up services, from supervising the installation to providing a “turn-key” service. Girton will also provide start-up and training assistance after the unit has been installed.



Engineering Advances:

Outdistancing the Field in Innovative Design

Girton engineers and designers continually reassess the market and its needs, listen to customers, and engineer and build equipment incorporating state-of-the-art technology. This “better mousetrap” approach has enabled Girton to score a number of “firsts” within the industry.

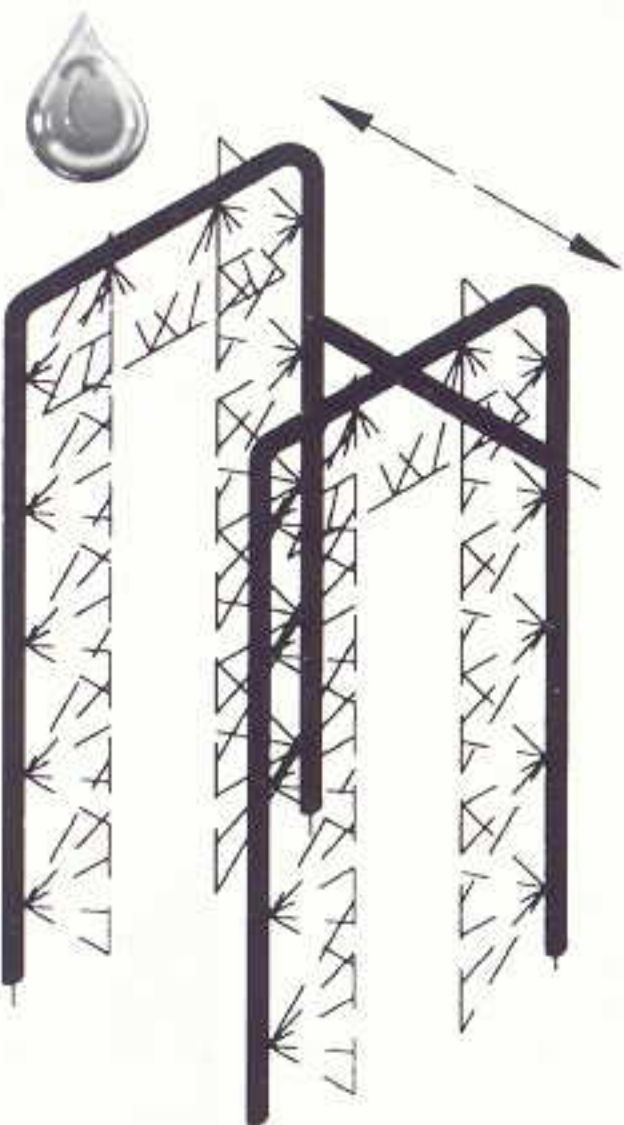
Hydro spray Design - Girton was the first to develop a positive oscillating header design assuring complete cleaning coverage to the top, sides, bottom and ends of the wash load. The system relies on outside power to move the header, allowing the use of the recirculating pump capacity to perform the cleaning action. Other manufacturers' products are powered only by the water pressure of the system and have large areas not covered by the sprays.

Self-Cleaning Screens - Girton developed a screening system that is relatively self-cleaning, designed to be easily removable without the use of tools.

Water Conservation - The Girton unit is designed to operate efficiently, conserving water - including the expensive purified water most often used during final rinsing.

CAD System Design - The utilization of CAD systems assists Girton in the design and archiving of each customer's designs.

We're not stopping here. Your needs create our challenges. Girton engineers into each unit all necessary features to meet or exceed the ever-changing FDA and pharmaceutical industry requirements. We'll work with you to find the most economical and efficient resolution for your washing needs.



Girton Positive Oscillating Header Design

Girton Documentation Package (optional)

If you would like to qualify the installation and operation of your equipment and/or system, Girton can provide you with an (optional) Documentation Package. This complete package includes all data and checklists necessary to give complete validation support of the equipment and the cleaning process.

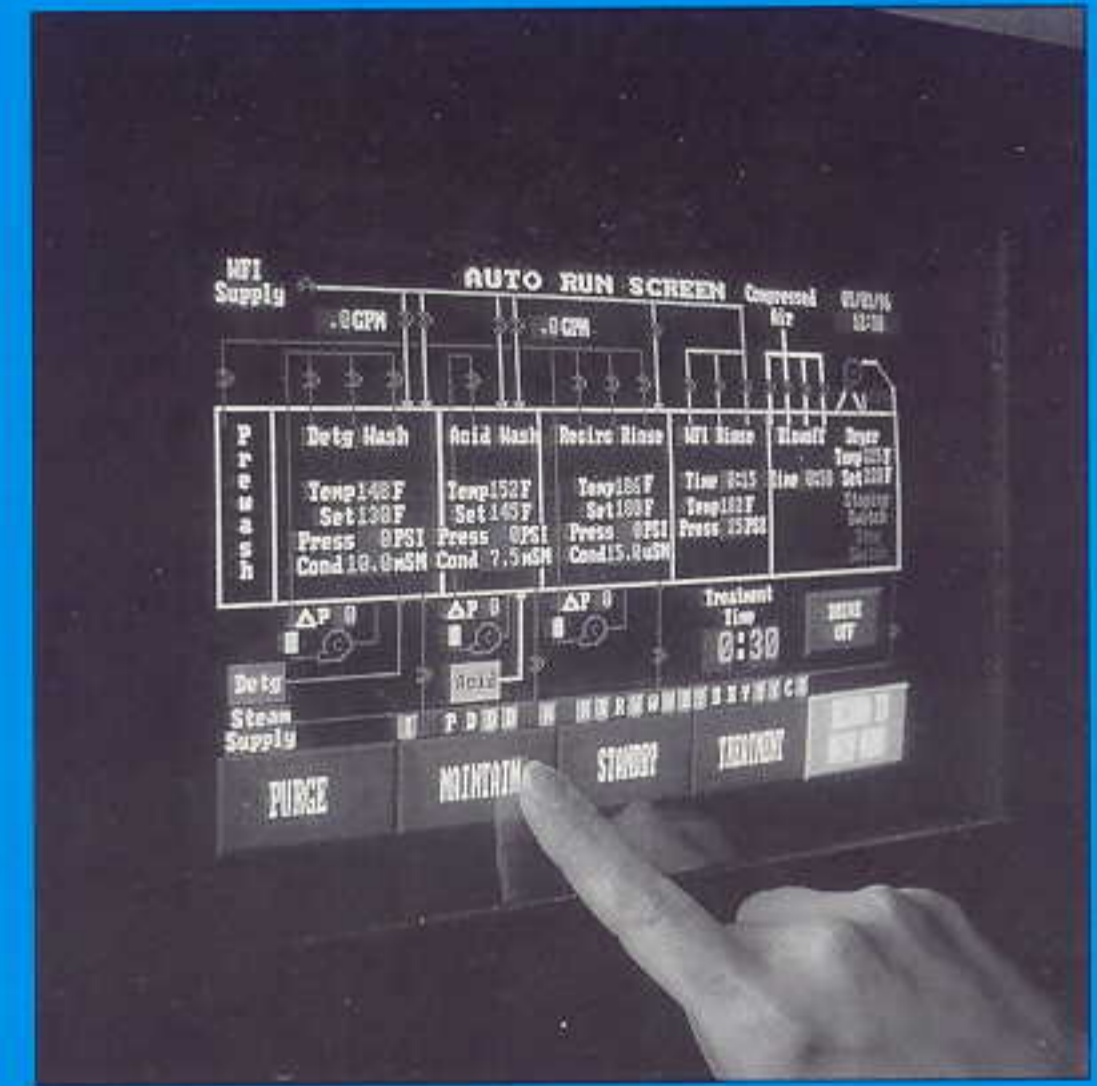
With our Factory Acceptance Testing package, all tests required for the installation and Operational Qualification

of the equipment are performed on the unit prior to its arrival at the job site. Any modifications or additions needed to qualify the system can be made at the factory prior to its shipment...saving you time and money.

After installation, the documentation package provides all necessary data and checklists to perform Site Acceptance Testing to qualify the installation and operation. You may then perform Site Acceptance Testing on your own, using the support package supplied by Girton.

Pharmaceutical Industry Items That Can Be Cleaned by Model 80-0:

- IBC's
- Various Size Vessels
- Drying Trays and Trucks
- Pails
- Machine Parts
- Large Glassware
- Pallets
- And many other items!



Optional Features to Handle All Washing Requirements

- Custom Roll-In Rack to Process a Wide Range of Components
- Custom Spindle-Type Racks
- Two Doors for Pass-Through Operation
- Separate Header for Purified, Non-Recirculated Rinse
- Integrated Drying System
- Effluent Cooling or Neutralizing Systems
- Printers for Validation and Record Keeping
- Complete Installation and Operational Qualification Documentation

Girton Cleaning Solutions: Validatable, Reliable, Economical.

**NEW
AREA
CODE
570**

Girton

**Girton Manufacturing Company, Inc., 160 W. Main St.,
P.O. Box 900, Millville, PA 17846-0900**

Phone: 717-458-5521 • Fax: 717-458-5589 • E-Mail: service@girton.com

Web Site Address - www.girton.com